

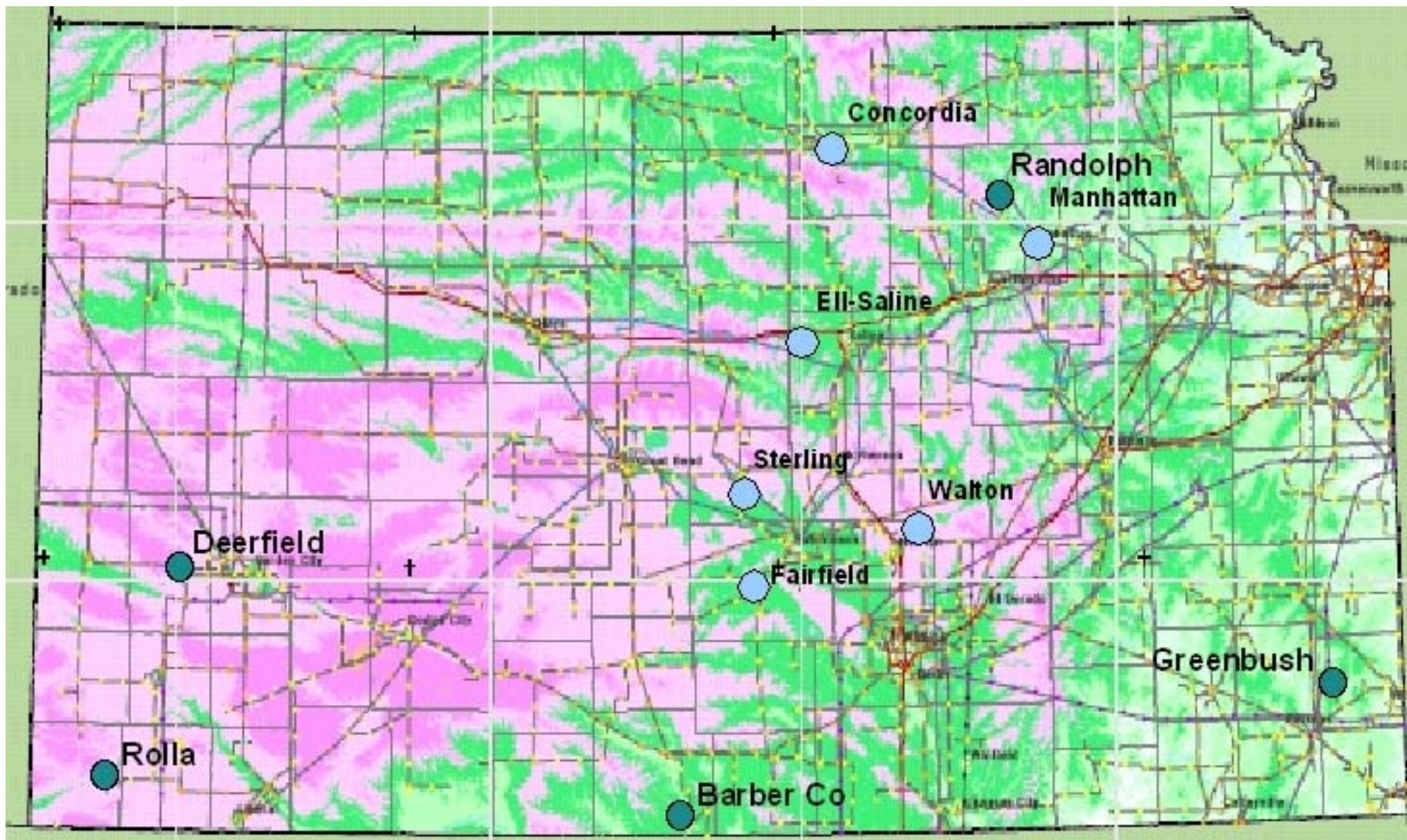
Dan Nagengast  
Kansas Rural Center  
[www.kansasruralcenter.org](http://www.kansasruralcenter.org)

Ruth Miller  
Wind Applications Center - KSU  
<http://www.eece.ksu.edu/psg/wac/>

## 2009 Wind for Schools Proposals

This year we will again be selecting five sites for installation of small turbines at rural schools throughout Kansas. These are the 5 key areas that we look at when we select schools.

- What is the **level of support within your community and school** for this project? We look for schools that have good support from the school administration and school board as well as community members and businesses. Many of our best projects have a “champion” who works to gain support from all part of their community.
- Are there any **groups, class projects, or curriculum focused on care of the environment and/or sustainability** at your school? What topics are they focused on? Some examples are: composting, biodiversity, and sustainable agriculture...
- Do you have **science teacher(s) who would be willing to incorporate the wind turbine into their curricula**? We will provide assistance in this area and help set up wind data streams.
- What is your wind class**? This can be found by looking at the “Wind Speed Map” at <http://www.kcc.state.ks.us/energy/wind.htm> We typically look for Class 3 wind or greater at 50m; however we have selected a few schools in class 2 areas.
- What is the area that you would like to put the turbine like**? The best site would be at least 200 ft from buildings and other obstacles, but not more than 1000 ft from a building using electricity all year long. At a minimum, there should be a site with a 100-foot radius that has no obstacles such as trees or buildings taller than 20 feet. This is to ensure the best flow of wind. If possible, please attach a couple pictures in .jpg from areas that you think look promising.











HARTLEY  
79









SKYSTREAM™ TURBINE  
WATER FLOW  
0000000000000000  
# Select Tool

SKYSTREAM 3.7™

remote interface



escape



enter



status

streamenergy.com

